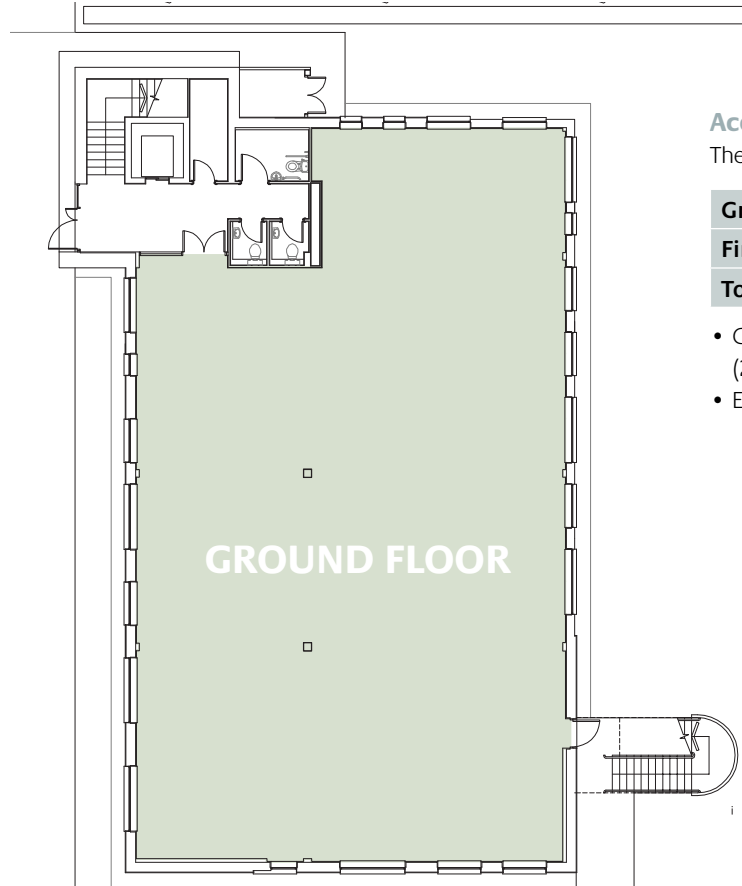
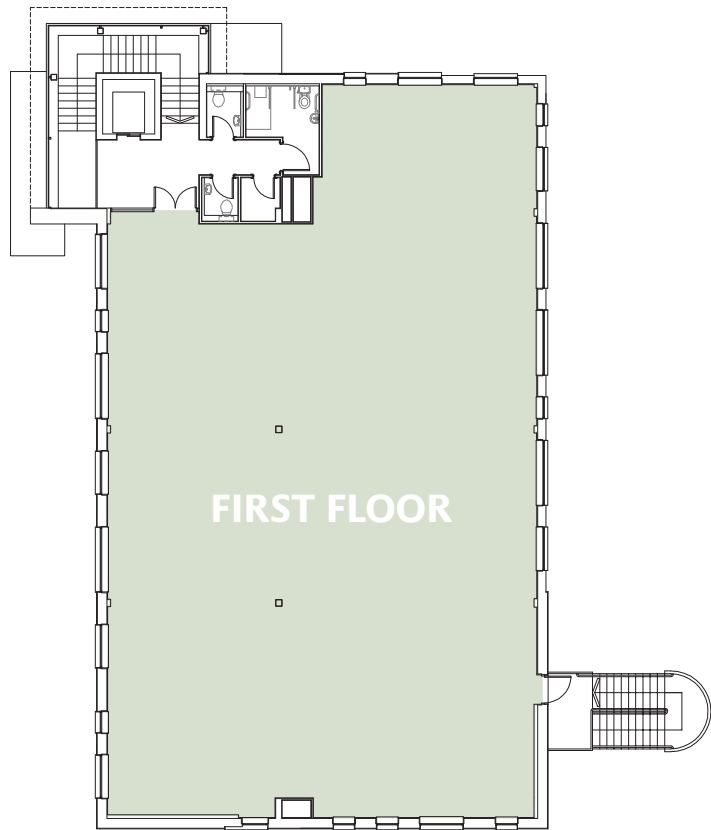




Shawfair Park Edinburgh

Building 3: 687 sq.m. (7,400 sq.ft.) - 26 car spaces



Accommodation

The approximate net lettable area of the building is as follows:

| | | |
|---------------------|----------------|---------------------|
| Ground Floor | 346 sqm | (3,726 sqft) |
| First Floor | 341 sqm | (3,674 sqft) |
| Total | 687 sqm | (7,400 sqft) |

- Generous car parking at a ratio of 1 space per 26 sqm (283 sqft) including dedicated disabled/accessible spaces
- Excellent provision of covered cycle stands

(i) The particulars are set out as a general outline only for the guidance of intended purchasers or lessees, and do not constitute, nor constitute part of, an offer or contract. (ii) All descriptions, dimensions, reference to condition and necessary permissions for use and occupation, and other details are given without responsibility and any intending purchasers or tenants should not rely on them as statements or representation of fact but must satisfy themselves by inspection or otherwise as to the correction of each of them. (iii) No person in the employment of Montagu Evans or Jones Lang LaSalle has any authority to make or give any representation or warranty whatever in relation to this property. **PROPERTY MISDESCRIPTIONS ACT 1991.** 1. The information contained within these particulars has been checked and unless otherwise stated, is understood to be materially correct at the date of publication. After these details have been printed, circumstances may change outwith our control. When we are advised of any change we will inform all enquirers at the earliest opportunity. 2. Date of publication - NOVEMBER 2008. 3. Unless otherwise stated, all prices and rents are quoted exclusive of Value Added Tax. Prospective purchasers/lessees must satisfy themselves independently as to the incidence of VAT in respect of any transaction.